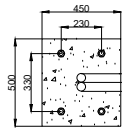
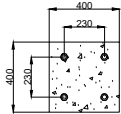
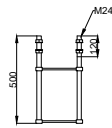


Ingjutningskorg
(IGK13030)



Kabelrör Ø50 2st



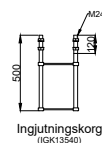
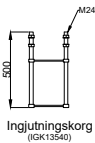
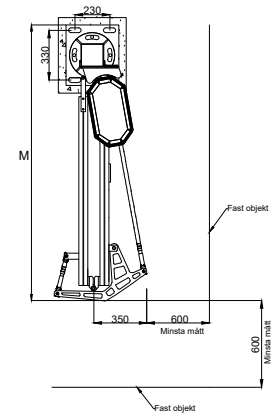
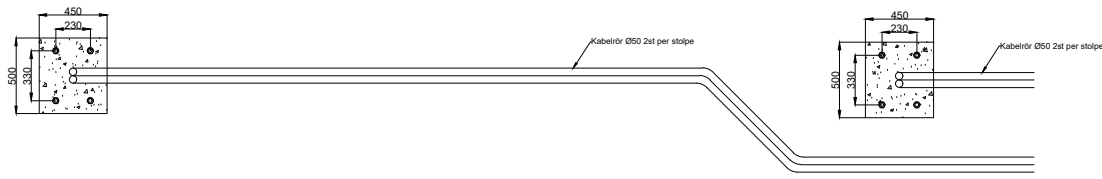
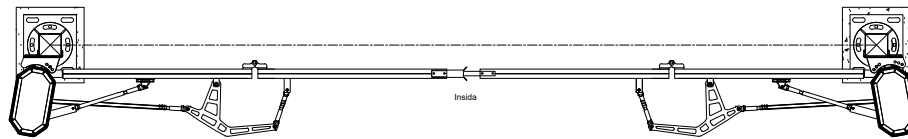
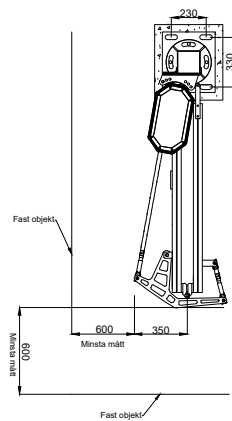
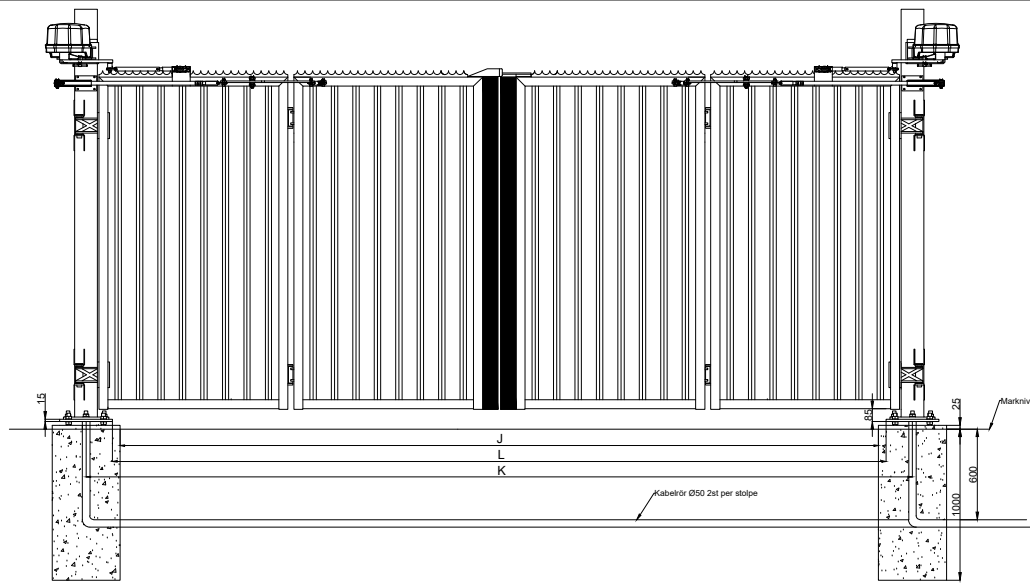
Ingjutningskorg
(IGK13540)

Enkelgrind				
Öppning	K	L	J	M
EG 2000	2310mm	1985mm	1885mm	1600mm
EG 2500	2810mm	2485mm	2385mm	1850mm
EG 3000	3310mm	2985mm	2885mm	2100mm
EG 3500	3810mm	3485mm	3385mm	2350mm
EG 4000	4310mm	3985mm	3885mm	2600mm

Fundamentsritning för Heras vikgrind enkel. Ritning visar vänsterhägd.
 Typ: WIKI.
 Serie: EGHV12040.
 Betongkvalitet C 25/30
 Fundamentsdjupet bör beaktas vid speciella markförhållande.

HERAS
Stängsel

NO.6
 Datum: _____
 Utgåva: _____
 2019-02-12
 Injutiör: WIKI EG



Dubbelgrind				
Öppning	K	L	J	M
DG 4000	4470mm	4120mm	4020mm	1600mm
DG 4500	4970mm	4620mm	4520mm	1725mm
DG 5000	5470mm	5120mm	5020mm	1850mm
DG 5500	5970mm	5620mm	5520mm	1975mm
DG 6000	6470mm	6120mm	6020mm	2100mm
DG 6500	6970mm	6620mm	6520mm	2225mm
DG 7000	7470mm	7120mm	7020mm	2350mm
DG 7500	7970mm	7620mm	7520mm	2475mm
DG 8000	8470mm	8120mm	8020mm	2600mm

Fundamentsritning för Heras vikgrind dubbel.
 Typ: WIKI.
 Serie: DGHV12080.
 Betongkvalitet C 25/30
 Fundamentsdjupet bör beaktas vid speciella markförhållande.



Rev: 3
 AP
 2019-02-12
 Ingjutning WIKI DG