



# Installation manual

## Heras Cloud Unit on B700



**Read this installation manual before connecting the Heras Cloud Unit to the B700! Act according to the manual and keep it in a safe place.**





## CONTENTS

<b>FOREWORD</b> .....	<b>4</b>
<b>1 THE HCU ON THE B700</b> .....	<b>5</b>
1.1 CONNECTIONS TO THE B700 .....	5
1.2 POSITIONING THE UNIT, MAGNET AND CONTACT .....	6
<b>2 ACTIVATING THE UNIT</b> .....	<b>9</b>
2.1 USE OF THE QR CODE .....	9
2.2 USE OF THE WEBLINK.....	11



## **FOREWORD**

With this installation guide you can correctly commission and configure the Heras Cloud Unit. To ensure that the user receives the correct information via the Heras Cloud Portal, it is mandatory to follow these instructions.

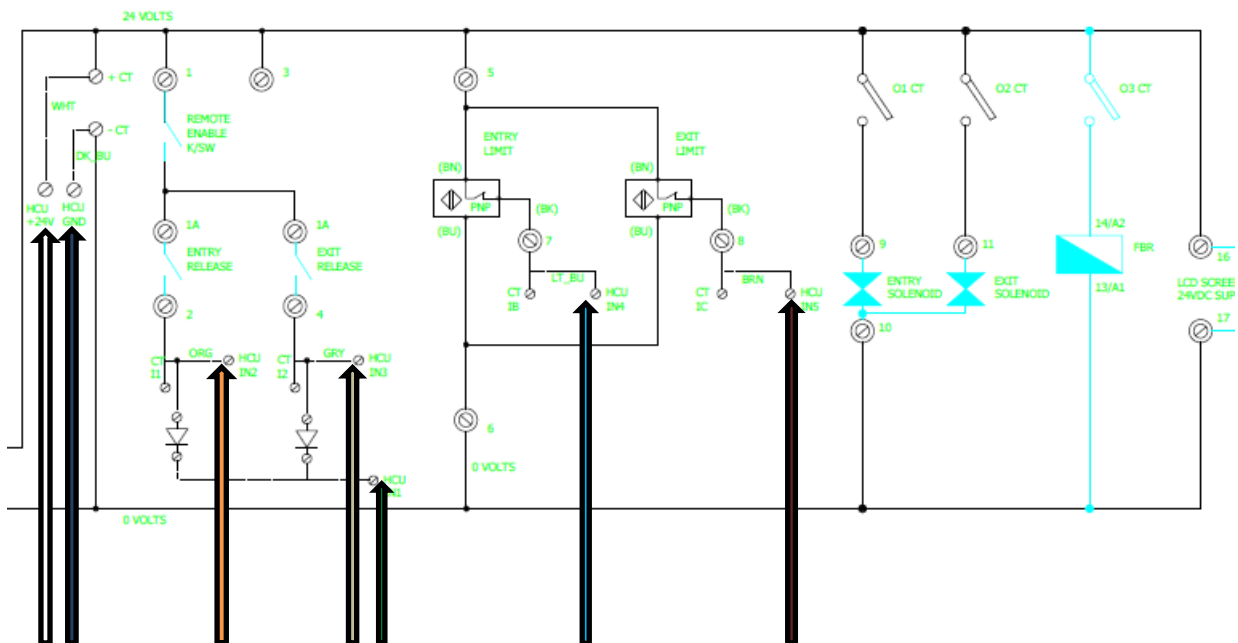
**Read this installation manual carefully before using the turnstile and the Heras Cloud Unit.**

Save the installation manual so that you can consult it if necessary.

# 1 THE HCU ON THE B700

Make sure you make the connections according to the instruction below. Because the Heras Cloud Unit uses a predefined template, it is mandatory to connect it exactly as indicated.

## 1.1 CONNECTIONS TO THE B700





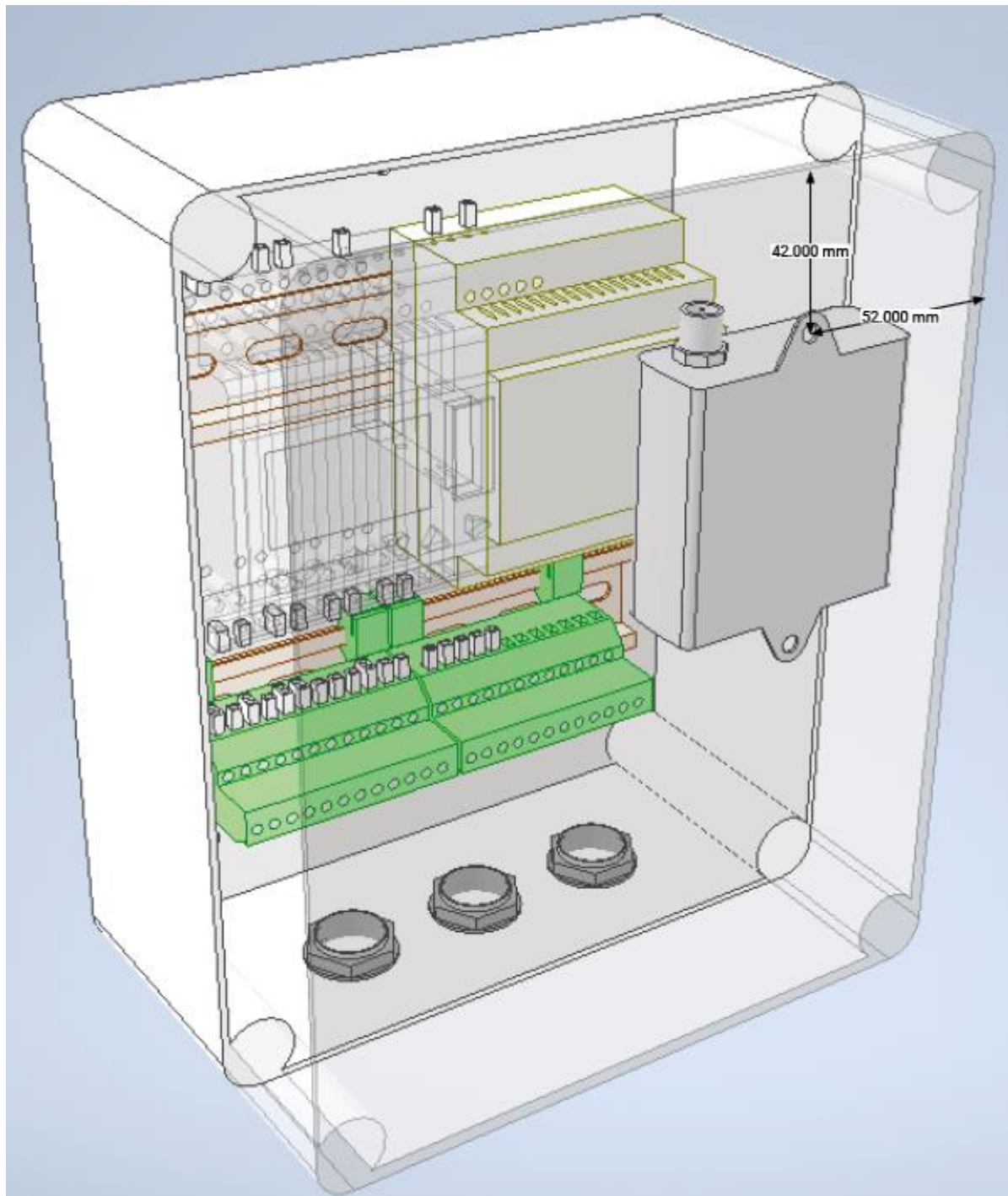
HCU	B700	Wire color	Description	Signal levels	Note
GND	- CT	Dark blue	(-) GND	0 VDC	Power -
24 VDC	+ CT	White	(+) 24V DC	24 VDC	Power +
In 1	2, 4	Green	Cycle counter	0V Inactive / +24V +1	Including diodes
In 2	2	Orange	Open entry	0V Inactive / +24V Active	
In 3	4	Grey	Open exit	0V Inactive / +24V Active	
In 4	7	Light blue	Proximity switch entry	+24V OK / 0V Active	
In 5	8	Brown	Proximity switch exit	+24V OK / 0V Active	
In 6		Purple			
In 7		Yellow			
In 8		White(MC)	Lid	+4V Closed / 0V Open	Magnet contact
4V Ref		White(MC)	Battery backup +4V Out		Magnet contact
4V Ref		Red	Battery backup +4V Out		
Relay 1		Black	N/O (Open via GSM)		
Relay 1		Black	N/O (Open via GSM)		
Relay 2		Pink	N/O (extra relay)		
Relay 2		Pink	N/O (extra relay)		

## 1.2 POSITIONING THE UNIT, MAGNET AND CONTACT

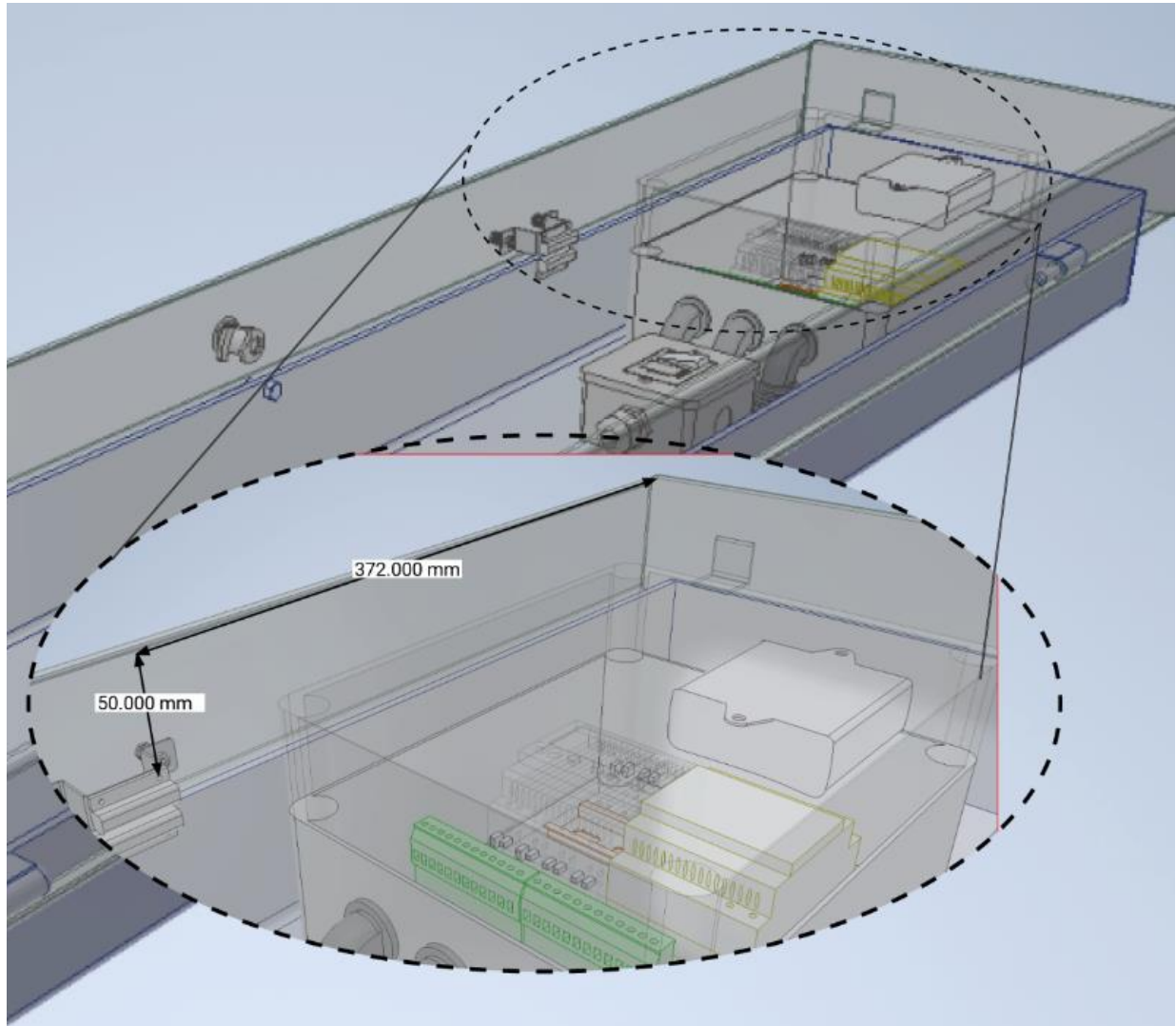
The figures below shows how to place the unit, magnet and the contact. Both magnet and contact have a self-adhesive side. Make sure the surface is clean before you stick it in position.

First attach the contact to the cabinet and then determine the exact position of the magnet. This requires a bracket to achieve the correct distance.

Unit on inside of the cover:

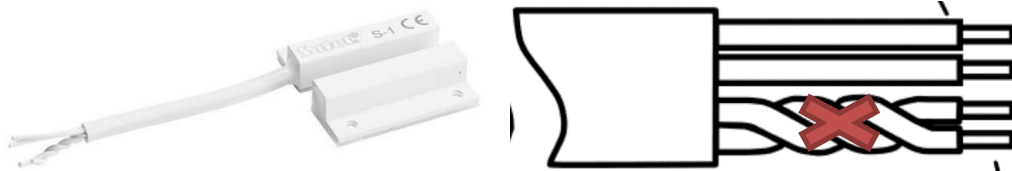


Magnet on lid and case:





Ensure that the correct wires are used. Only the loose wires must be used; the others are to be cut off.



## 2 ACTIVATING THE UNIT

### 2.1 USE OF THE QR CODE

The HCU has a sticker with a QR code and information about the phone number and SIM serial number (ICCID) in the device.

Scan the QR code using the camera of your mobile phone. The browser opens a web form in which the telephone number of the HCU is already entered. If the HCU is already activated, you will be redirected to Heras Connect, where you can log in to gain access to the HCU.

Fill in the fields of the form.

## Activation

Language English ▾

Phone number:	<input type="text"/>
Unit name:	<input type="text"/>
Invoice reference:	<input type="text"/>
Add to account:	<input type="text"/>
Your email:	<input type="text"/>
Notes:	<input type="text"/>
Country:	<span>🇬🇧 ▾ United Kingdom</span>
Timezone:	<span>Europe/London ▾</span>
Terms of agreement:	<input type="checkbox"/> I agree on the terms

Language: Select the language in which the form will be displayed.

Phone number: Is automatically filled with the telephone number.

Unit name: Enter **Site name + location + gate description**; this is how the unit will be shown in the Heras Cloud Portal. For example: DPD Leeds main gate or Amazon Manchester barrier 1. This name must be clear to both the customer and us.

Invoice reference: n.a.



Add to account:	E-mail address to the cloud account to which the device must be added. For the UK this is: <a href="mailto:service@heras.co.uk">service@heras.co.uk</a>
Your email:	Enter your own email address.
Notes:	n.a.
Country:	Enter the country in which the unit will be installed.
Tim zone:	Select the time zone if there is more than one.
Terms of agreement:	Accept the conditions that are available on the Heras website.
Activate:	Click to activate the HCU.

## 2.2 USE OF THE WEBLINK

The same form can be accessed via <https://connect.heras.com/activation>

Please note: the telephone number must be entered manually and must contain the telephone number as stated on the HCU (e.g. including + 46 or +31 ...)

Contact the office staff to continue testing.

**HERAS**

**HERAS**

---

**Heras B.V.  
Hekdam 1  
P.O. box 30  
5688 ZG Oirschot**

**Tel: +31 499 55 12 55  
E-mail: infoNL@heras.nl**

---

Local supplier stamp