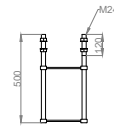
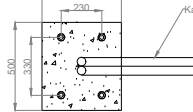
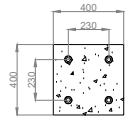


Ingjutningskorg
(IGK13030)



Ingjutningskorg
(IGK13540)

Enkelgrind				
Öppning	K	L	J	M
EG 2000	2310mm	1995mm	1885mm	1600mm
EG 2500	2810mm	2485mm	2385mm	1850mm
EG 3000	3310mm	2985mm	2885mm	2100mm
EG 3500	3810mm	3485mm	3385mm	2350mm
EG 4000	4310mm	3985mm	3885mm	2600mm

Fundamentsritning för Heras vikgrind enkel. Ritning visar vänsterhängd.
 Typ: WIKI.
 Serie: EGHV12040.
 Betongkvalitet C 25/30
 Fundamentsdjupet bör beaktas vid speciella markförhållande.

HERAS

NO.7
 2021-06-16
 Ingjutning WIKI E.G.